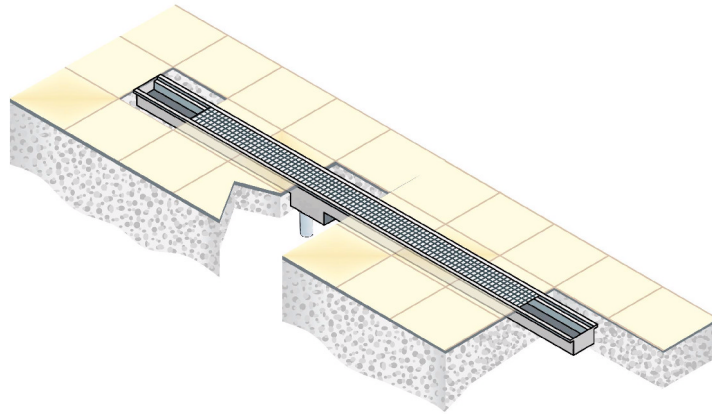
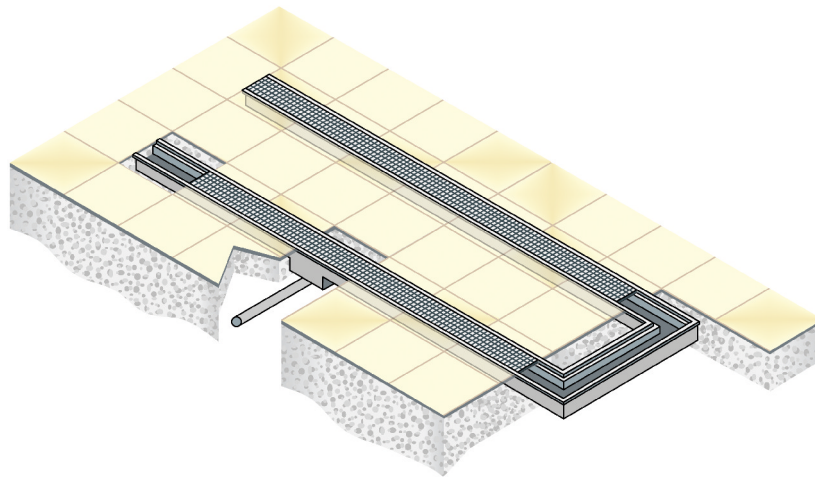


**CHANNEL WITH GRATED COVER ICxC G**  
**TECHNICAL SPECIFICATIONS**  
AISI 304/316 STAINLESS STEEL



CHANNEL WITH GRATED COVER AND TRAP  
WITH VERTICAL DISCHARGE, FLOOR FITTING LAYOUT



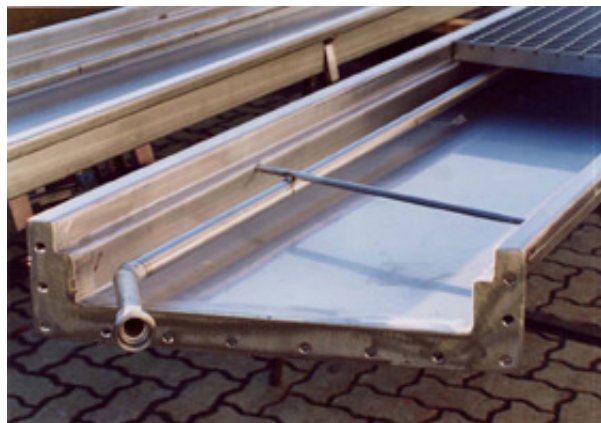
CHANNEL WITH GRATED COVER AND TRAP  
WITH LATERAL DISCHARGE, FLOOR FITTING LAYOUT

**CHANNEL WITH GRATED COVER ICxC G**  
**TECHNICAL SPECIFICATIONS**  
**AISI 304/316 STAINLESS STEEL**



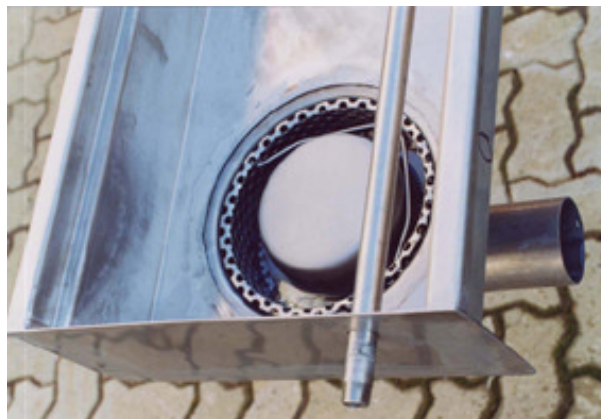
THE CHANNEL CAN BE MADE FOLLOWING THE CLIENT'S DRAWING. FOR SECTIONS GREATER THAN 6 LM, FLANGING IS REQUIRED TO EASE TRANSPORTATION AND FITTING OF THE CHANNEL ITSELF.  
 THE INTEGRATED WASHING ACCESSORY, IN ½" TUBULAR STAINLESS STEEL, IS PARTICULARLY EFFICIENT AND EASY TO USE.

DETAIL OF THE FLANGING USED FOR SECTIONS GREATER THAN 6 LM. THE WASHING PIPE WITH UNION IN LINE WITH THE FLANGE CAN ALSO BE SEEN.

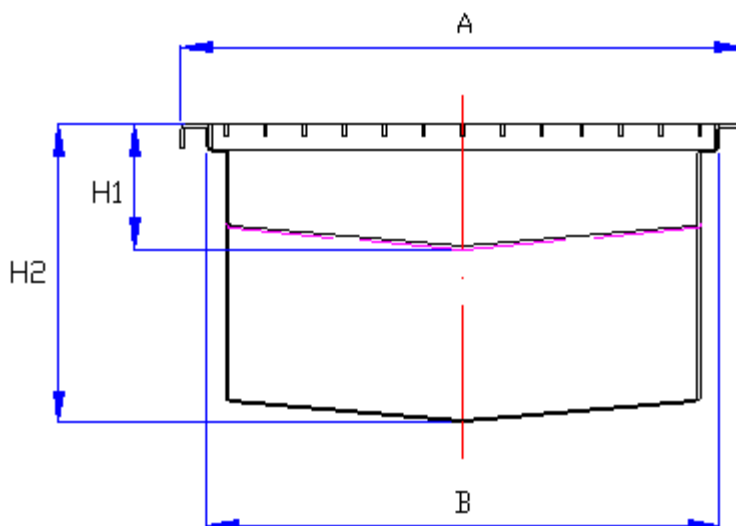


THE DRAIN TRAP CAN BE POSITIONED AT ONE END OR IN THE MIDDLE DEPENDING ON THE DEVELOPMENT OF THE CHANNEL. SEVERAL DRAIN COVERS MAY BE NECESSARY DEPENDING ON THE LENGTH OF THE CHANNEL AND NUMBER OF DISCHARGES FORESEEN. THEIR SHAPE AND DIMENSION ARE IN ANY CASE VARIABLE DEPENDING ON THE CHANNEL MODEL AND CLIENT'S NEEDS.

DRAIN TRAP DETAILS POSITIONED AT ONE END WITH LATERAL DISCHARGE CREATED ON A C 30 MODEL CHANNEL. THE WASHING PIPE CAN ALSO BE SEEN WITH STUB PIPE IN CORRESPONDENCE WITH THE CHANNEL PLUG.



**CHANNEL WITH GRATED COVER ICxC G**  
**TECHNICAL SPECIFICATIONS**  
 AISI 304/316 STAINLESS STEEL



TYPICAL SECTION OF A CHANNEL WITH GRATED COVER ICXC G

| MODEL    | DIMENSIONS (mm) |     |                |                      |
|----------|-----------------|-----|----------------|----------------------|
|          | A               | B   | H <sub>1</sub> | H <sub>2</sub>       |
| ICxC G15 | 150             | 100 | ON REQUEST     | H <sub>1</sub> + I*L |
| ICxC G20 | 200             | 150 | ON REQUEST     | H <sub>1</sub> + I*L |
| ICxC G25 | 250             | 200 | ON REQUEST     | H <sub>1</sub> + I*L |
| ICxC G30 | 300             | 250 | ON REQUEST     | H <sub>1</sub> + I*L |
| ICxC G35 | 350             | 300 | ON REQUEST     | H <sub>1</sub> + I*L |
| ICxC G40 | 400             | 350 | ON REQUEST     | H <sub>1</sub> + I*L |

I = INTEGRATED SLOPE EQUAL TO 5-10 MM/LM  
 L = CHANNEL LENGTH IN LM